

People's Powerline

What's Inside

Generator safety information
page 2

Generator financing program details
page 2

How Time Flies promotion details
page 3

Classified Advertisements
page 4

New Year's Holiday Closing

Monday, January 2

Don't Get Caught in a Storm

Power up with a portable generator.

Droughts, tornados, ice storms and yes, even earthquakes! Oklahomans experience a broad spectrum of nature's wrath. 222905200

At People's Electric Cooperative, our goal is to provide you with highly reliable electric service, and 99.9 percent of the time we do. However, Oklahoma weather can change at the drop of a hat. To help our members prepare for the unexpected, PEC provides portable generators and a welder/generator to members for purchase, with financing available to qualified members at an interest rate as low as 5% this month.

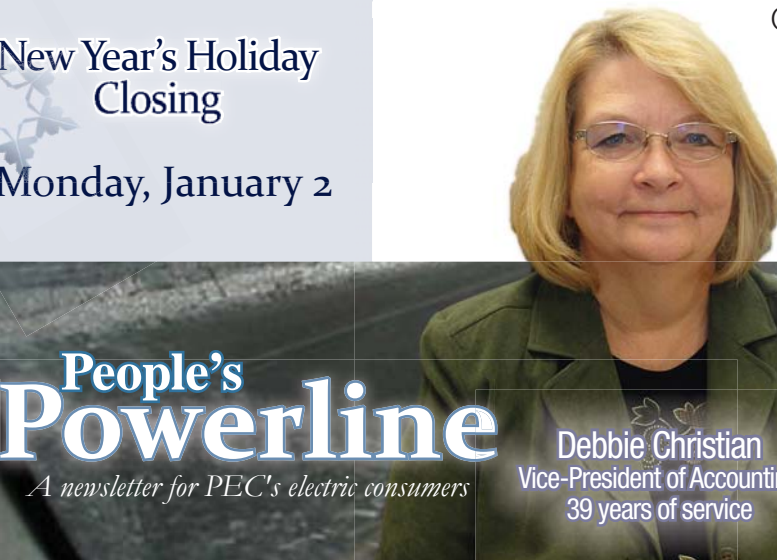
A 5,500 watt pull-start, priced at *\$649.00 and a 7,500 watt electric start generator, priced at *\$950.00 by Generac are available. Or, a 10,500 watt Lincoln Ranger 225 Electric generator/welder may better suit your needs, priced at *\$3,099.00.



Generac 5500 Watt Pull Start *\$649.00

Call PEC's Customer Service department at toll-free 1-877-456-3031 or (580) 332-3031 (Ada area). Or come in and talk with us today. We want to help you be ready the next time bad weather "comes sweeping down the plains."

See "Power on Wheels," next page . . .



Debbie Christian
Vice-President of Accounting
39 years of service

Report Power Outages 24 hrs/day 7 days a week:

1-877-272-1500 or
(580) 272-1500, local Ada Area

... continued from page 1.

Power on Wheels

If one of your New Year's resolutions is to be better prepared for unexpected outages, January is the best time take advantage of PEC's generator financing program. 133406300 PEC is currently offering a low promotional rate of 5% (APR) with a maximum term of 24 months* for portable generators, along with the 10,500 watt Lincoln welder/generator shown below. Payments are simply added to your monthly electric bill.

WARNING!

Portable electric generators can be extremely dangerous.

Put Safety First!

- **Never connect a generator directly to your home's wiring.**
- **Never plug an electric portable generator into a regular household outlet.**
- Use proper electrical cords.
- Make sure your generator is properly grounded.
- Carefully read and follow all manufacturer instructions, suggestions and safety precautions.
- Always follow local, state and national fire and electrical codes.
- Always have a fully charged fire extinguisher nearby.
- Never operate indoors — protect yourself from carbon monoxide poisoning.
- Never fuel a generator while it is operating.

PEC strongly encourages our residential customers to have a properly licensed electrician install the equipment necessary to safely connect emergency generators.



Generac 7500
Watt Electric
Start
*\$950.00

* Prices subject to change; applicable tax & financing charges may apply; Standard qualification guidelines apply. Borrower must be a PEC member in good standing. 40700400

Example transaction during January 2012: 7500 watt Electric-start generator, \$1,037.28 (includes tax), \$0 down payment, 24 month loan term at 5% fixed APR = approximate \$50/month payment.

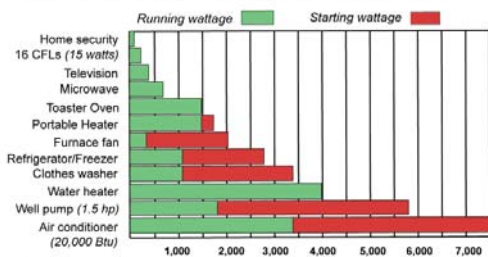


Lincoln Ranger 225
10,500 Watt
Welder/Generator
*\$3,099.00

The Right Portable Generator for the Job

Before purchasing or operating a portable generator, make a list of the appliances you will need to run at the same time. Find both starting and running wattage requirements on appliance nameplates or in owner's manuals; add them up to determine the total wattage your generator should handle.

Sample running wattages, as compared to spiked starting wattages:



Sources: North Carolina Association of Electric Cooperatives; National Rural Electric Cooperative Association



January 2012 *How Time Flies*
Products:

Generator & Generator/Welder Loans
Sure B.E.T. (Bills Electroncially Transferred)

Celebrating 75 years and counting...



How Time Flies

with PEC Products and Services



PEC's First Substation at Walter Graper's Fittstown, Oklahoma (1938)

By saving energy, you can build on a dream that started decades ago, ensuring that the spirit on which PEC was built continues for generations to come.

Beginning this month, PEC's *How Time Flies* product promotion will provide special discounts, purchase incentives and gifts to members every time they join or select a PEC *How Time Flies* product or service.

Take advantage of a monthly *How Time Flies* product, and take home a complimentary shower timer (shown below) and two energy efficient CFLs. 1013100800 Plus for each *How Time Flies* product you purchase or join, you'll also be entered to win a 75th Anniversary Commemorative His/Her Watch Set to be given away March 1, June 1, September 4, November 1 and December 31. Members who take advantage of a monthly *How Time Flies* product will also be entered to win PEC's Christmas ENERGY STAR® Appliance drawing on December 7, 2012.



(left) Members receive a free shower timer during 2012 when they join or purchase a monthly featured product. Simply rotate the shower timer, which is affixed to the shower wall with a suction cup, to activate the hour glass style sand timer. When all sand has traveled from one cavity to the other, you should be clean and out of the shower.

Look for monthly featured product details each month in this newsletter!

People's Powerline is published monthly by

People's Electric Cooperative
P.O. Box 429, Ada, OK 74821

Business Hours

7 a.m. to 6 p.m. Monday-Friday
(877) 456-3031 or (580) 332-3031 (Ada Area)

IMPORTANT DATES

Bills mailed 31st
Bills should be paid by the..... 10th
Cutoffs made..... 20th

24 Hour Outage Reporting System:

(877) 272-1500 or
(580) 272-1500 (Ada Area)



Providing electricity and energy service to over 20,000 meters in the following 11 south central Oklahoma counties: Atoka, Carter, Coal, Garvin, Hughes, Johnston, McClain, Murray, Pittsburg, Pontotoc and Seminole.

STEPS TO FOLLOW IF YOUR ELECTRICITY GOES OFF

1. Check your fuse or breaker box.
2. Check with your neighbors. Are they off? Have they reported the outage?
3. Call our 24 hour Outage Reporting System at toll-free 1-877-272-1500 or (580) 272-1500 (local Ada area).
4. Always report outages promptly! Remember, the cooperative's responsibility ends at the meter. If a service call is made and the trouble is found on the consumer's side, a \$50.00 service charge will be assessed.
5. **For faster service, please make sure we have the correct phone number(s) for your account on file. Your phone number will be used to access your account information.**

BOARD OF TRUSTEES:

Dr. Laurin Patton - Ada, *Chairman & President*
Eldon Flinn - Fittstown, *Vice Chairman*
Jack Lambert - Ada, *Secretary*

Bob Thomas - Coalgate
Assistant Secretary/Treas.
Matt Holder - Sulphur, *Trustee*

How Time Flies

when you're having fun . . .



A significant amount of the average home energy bill pays for heating water. Take five-minute showers instead of baths and make sure your water heater is set no higher than 120° F.



Source: U.S. Department of Energy

MOBILE HOMES, RV'S, BOATS, & ATV'S

2000 Redman mobile home, 16x60, one owner, 3 bdrm., 2 bath, refrigerator, stove, central heating/air, \$18,500 o.b.o.; (580) 320-2303

2003 ALL SEASON EXCEL 5th Wheel, w/ 3 slides & all the upgrades, two front porches, central heat & air. \$28,000; Wells Cargo storage trailer, \$7,000 (580) 279-0525

2008 Jayco 806, 20' unfolded, 3-way refrigerator, central heat, A/C, stove, new battery, spare tire. (580) 421-6607

27 ft. travel trailer, complete kitchen, bath w/ shower, central heat & air, twin beds, couch, \$2000. (580) 340-1064

REAL ESTATE

1500 sq. ft. log cabin, 55 ac., Hwy 31, E. of Stuart, partly wooded, excellent hunting, stock pond & barn, 3 bdrm., 2 ba., fireplace, A/C, deck/swing on front porch. (918) 429-1366

2 story home on 5 ac., approx. 2,500 sq. ft, 4 bdrm, 1.5 bath, game room, N. of Sulphur, \$81,000. (405) 250-8622

For rent in Allen, 1 bdrm., 1 bath house w/ carport, washer/dryer, stove, refrigerator, \$250 dep., \$275/month. (580) 857-2876

2300 sq. ft., 3.33 acres, minutes from Ada, built in '07, 3 bdrm/2 bath, 3 car garage, pool, low utility costs, \$225,000. (580) 272-4222

LIVESTOCK & PET

Angus Bulls, 8-12 months old, Angus business 53 years, same location (580) 456-7241

2 yr old Hereford Bulls, range raised, service ready. (580) 456-7830

Reg. Polled Hereford herd sire, remittal online 122L genetics, 2,300 lbs.; a few reg. polled Hereford bulls and bred cows. (580) 332-2468

Spanish Billy, call for price & more info. (580) 320-1620

WANT TO BUY

Grace Baptist feeds the needy & elderly each Monday & is in need of a food freezer at a reasonable price or a donation to our soup kitchen. couch30shirley@yahoo.com (405) 238-0437

Want to lease: pasture for stocker steers, 1-5 yrs. (918) 625-5281

A set of taper pin bed rails. (580) 332-3592

"End of life" electronic equipment such as computers, copiers, monitors, etc. (580) 366-2225

Honda 300 4x4 ATV, red color, excellent cond.. (405) 645-2270

FURNITURE & APPLIANCES

1949 Chambers C-90 Vintage Stove, original freedom red paint, pop-up broiler, childproof handles and hidden pop-up broiler. Excellent condition. \$6,500. (405) 207-7928

Duncan Phylfe mahogany dining table w/ drop sides & 6 padded chairs, and a matching china cabinet; antique coffee table, \$20 o.b.o., antique reupholstered chair, \$50. (405) 469-4194

Dorm size Black and Decker refrigerator, only used 4 months, \$65. (405) 941-3369

18 cu. ft. refrigerator, \$50. (580) 332-3550

Queen Quilter Eighteen quilting machine on wood frame, speed and stitch regulated, used once, do not have room to keep it, \$4,000 o.b.o. (580) 399-3383 or (405) 249-2671

FARM & EQUIPMENT

8610 IH Bale Processor; 2 BMW R80 RT motor cycles (580) 320-3518 or (580) 759-3578

Hyd. hay spear; Ralley 4-wheeler. (580) 277-9343

2 loader buckets: 1 5' John Deere and 1 6' Massey Ferguson. (405) 238-1745

Front end loader, Great Bend 800, fits 70-120 horse power tractor, excellent condition, 7 ft. wide bucket and spear, 15.5 x 38 tires, \$2,850. (580) 272-3967

18 ft. 2 axle car hauler trailer, steel floor, elect brakes, \$1,500. (580) 421-9829

Kid's saddle and blanket, great condition, \$150; leather bridle and purple halter w/lead rope, fits small horse/pony, \$15; Ada area. (580) 320-4342, leave message.

AUTOMOTIVE

2009 Nissan Maxima S 24,000 miles, mint condition, fully loaded, 26 mpg hwy/21 mpg city, \$23,400. (580) 272-7334

1999 Chevy 1500, 2 w/d, extended cab, new tires, 168,000 mi. asking \$3,500 o.b.o. (580) 320-1620 (call/text)

1996 Cadillac Deville, really nice, white, soft top, all elec. leather seats, under 100,000 miles, new plugs, wires and battery, \$2,700. (405) 428-2006

1996 Grand Am, red, runs well, \$2,000 (580) 436-0543

1985 Cadillac El Dorado Biarritz, classic collector dream new motor. (405) 238-5849

1984 Yamaha Venture Royal motorcycle, road-ready, fully loaded w/radio, hard bags, trailer hitch, and more, \$2,000 (580) 456-7616 or (580) 235-1415

MISCELLANEOUS

6' x 8' tilt trailer, good condition, \$300. (580) 332-2809

4061 ft. 2 7/8 in. pipe, \$1.35/ft.; 422 3/4 in. sucker rods, \$8 ea. (405) 627-3920

Invacare 6-way functional all electric hospital bed, adjustable, includes a gel mattress, make an offer if interested, the mattress alone sells for \$200. (405) 238-5206

Metal roofs, free estimates, 75 colors, vinyl windows, siding, room estimates. (405) 783-4284

2002 GMC 5.3 engine and transmission, \$750 o.b.o. (580) 265-4414 211000401

Nearly new electric/manual hospital bed, \$250. (580) 279-6116

Good T.V. antenna w/ pull out poll, \$75; cordless drill (Black & Decker), \$60; new set of socket wrenches, \$25. (866) 756-9298

Come cut free firewood, Sat. or Sun., 10:00 a.m. - 5:00 p.m., as much as you want, oak and pecan, Joy, Oklahoma, call after 5 p.m. (405) 590-7537

Alfalfa hay bales 14-16; LaCrosse sleeper sofa, standard bed size, very good condition, \$400 o.b.o.; Baldwin Acrosonic piano, \$700 o.b.o. (405) 665-2898

Large STIHL chainsaw \$225. (580) 421-5678

Will do house repairs, siding, windows, doors, decks, dry wall, 30 years experience, free estimates. (580) 456-7446

Seasoned firewood, \$60/truck, \$75 delivered. (580) 320-4603

Embroidery tea towel sets, crocheted large and baby afghans, dish cloths, pot holders, place mats, burp pads and much more. (580) 332-7508 Leave a message

New 8x12 storage shed, will deliver, \$1,295. (405) 783-4370

Log cabin quilting, all over custom quilting by local award winning quilter. Have 5 quilts quilted and get 10% off the 6th. (580) 857-2163

Grass finished beef, lamb & pastured poultry. (580) 777-4799

Used rolls of barbed wire; free use lumber (405) 238-2111

4x6 round bales Bermuda, prairie grass mix, good horse hay, barn stored, \$130/bale, 1.5 mi. N of Ada, can load. (580) 436-4352.

Relay for Life predator hunt in SE OK sponsored by Choctaw Electric Co-op on 2/11/12. Purchase packets by 12:00 on Fri., Feb. 10. For more info, call (580) 512-6543 or (580) 317-5164

Account Number Winners

Johnny Chandler of Stratford found his account number in last month's newsletter. The find netted him a \$5 credit on this month's electric bill. The other numbers belonged to Stephen Martin of Wynnewood, L.E. Harmon of Davis, Vernon Morris of Stonewall, and Evelyn Blevins of Pauls Valley. It's easy to win, just find your account number located somewhere in the newsletter, then call, write or come to PEC by the 12th of the month in which your number is published and claim your \$5.

-FREE-
Classified Ads for PEC Members!

Type or print your ad on the lines below and mail it in. Remember, we are limited on the amount of available space, so mail ads as soon as possible or email your ad to ads@peoplesec.com with name/account number.

Name: _____

Acct. No.: _____ Phone No.: () _____

January 2012

Since we are limited on the amount of available space, ads will be taken until the classified section is full. Ads received after the section is full will not be held for the next issue. They should be re-submitted. The number of ads published each month will vary according to availability of space and ad content. We reserve the right to delete words and edit ads if they are too long. Remember to identify ads with your name, phone number and account number. This is a free service to PEC members. Clip and mail the above form to: PEC Newsletter - P.O. Box 429, Ada, OK 74820.